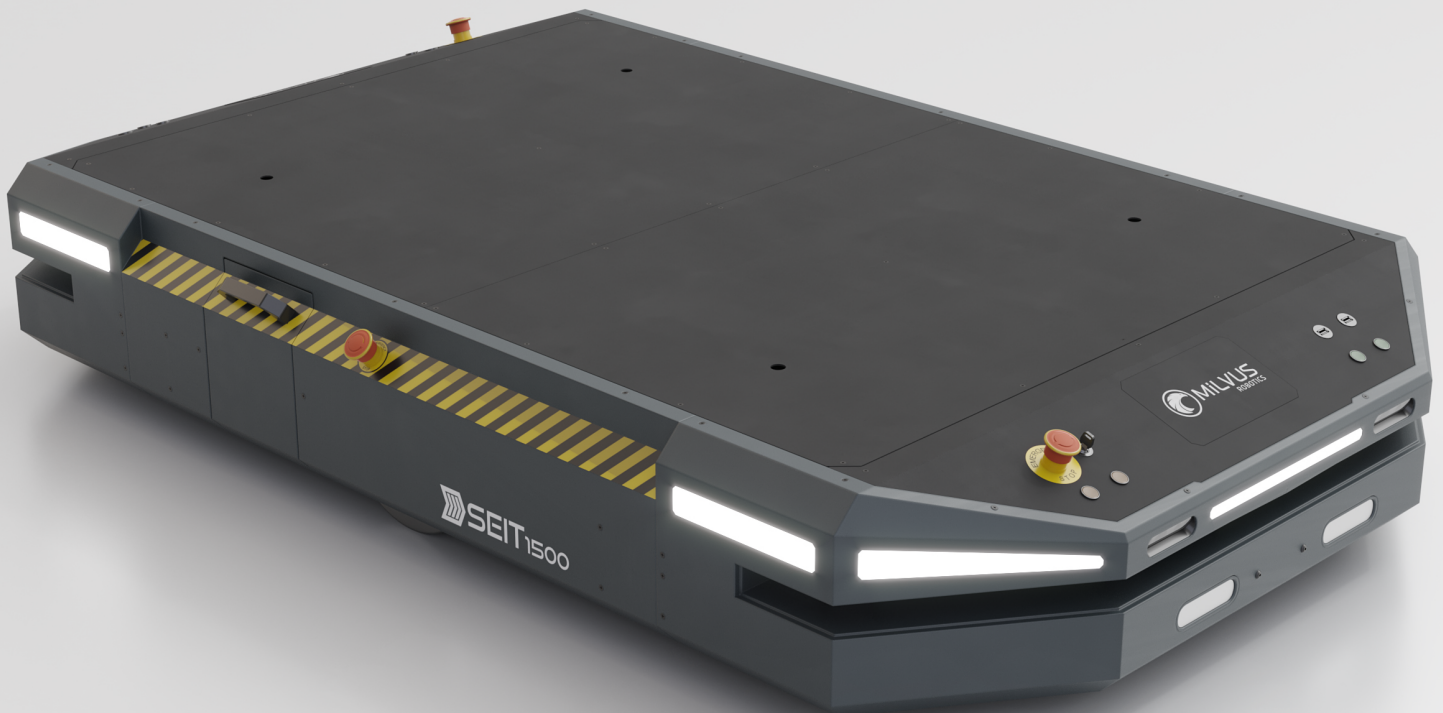


AUTOMATE YOUR MATERIAL TRANSPORT DUTIES

SEIT transports materials autonomously without any infrastructure cost. Sensing and building the map of the environment, it avoids obstacles en route its destination and communicates with other systems in terms of Industry 4.0. SEIT ensures safety and high efficiency in facilities in addition to excellent ROI it yields.



INFRASTRUCTURE FREE
Navigation requires no physical markers



COLLABORATION
Works as a team member



DURABLE & STRONG
Designed for heavy loads and tasks



AUTO-CHARGING
Recharges on its own



SHORT ROI
Pays you back



PRECISE
Transports with reliable accuracy



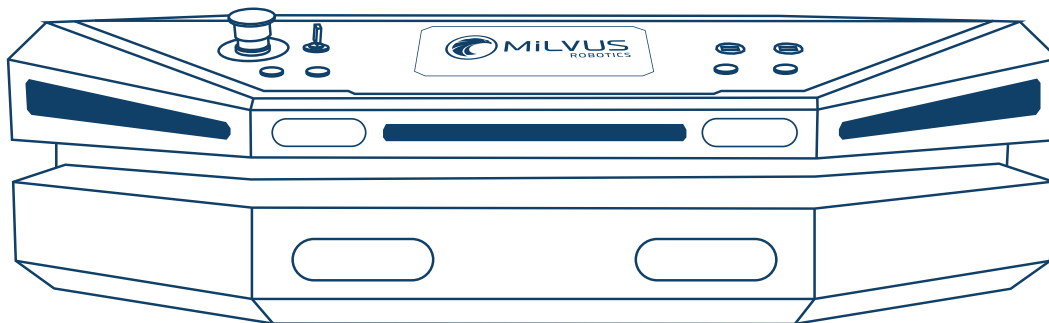
EFFICIENT OPERATION
Fully autonomous rather than automated



SAFE NAVIGATION
Navigate safely around people and objects



FLEET MANAGEMENT
Provides centralized control of robots



TECHNICAL SPECIFICATIONS

DIMENSIONS AND WEIGHT

External Dimensions	1650 x 1080 x 297 mm (L x W x H)
Loading Area Dimensions	1220 x 960 mm (L x W)
Weight	270 kg
Weight (With Lift Attachment)	-
Height w/ Lift Attachment (Closed)	-
Lift Stroke	-
Height With Conveyor (Minimum)	-
Ground Clearance	40 mm

PERFORMANCE

Max Payload	2000 kg
Max Speed	1.5 m/s (Limited)
Gradeability	%5 / 3° @ 0.5 m/s
Drive Configuration	Differential
Turning Radius	Turn in place ability, 870mm sweep area radius
Positional Accuracy (Up to)	+/- 1 cm, +/- 1 deg
Suspension	Passive

POWER

Battery	Li - Ion / 48V - 60 Ah
Charge Time	2 hrs for %0 to %80 - 3 hrs for %0 to %100
Nominal Run Time	8 hrs
Charger Safety	Automatic Voltage Detection and Smart Charge Start, Short Circuit Protection, Reverse Polarity Protection, Over Voltage Protection

ENVIRONMENT

Operation Environment	Indoor
Operating Temperature Range	0°C to 40°C
Storage Temperature Range	5°C to 50°C
Humidity	10-95% non-condensing

CONNECTIVITY AND INTERFACE

General Purpose I/O	Inputs: 6 digital (3 safety), Outputs: 3 digital (1 safety)
Communication	2 USB 2.0 (Non-isolated) (supplied with 1x USB Ethernet Converter)
Power for Attachments	Unregulated battery power, 48V - 10A with circuit breaker (On-Demand regulated 24V - 10A with overcurrent protection)
Wi-Fi	802.11 - 2.4/5.0 GHz - Internal Antenna

SAFETY AND COMPLIANCES

Standards	EU Directives or regulations 2006/42/EC and EN6204-1, ISO 13849-1&2, ISO12100, Referencing EN 1525:1997
Safety Hardware	Front and Rear safety series (Cat 3) LIDAR sensors, Cat 4 Safety PLC, 3D Depth Camera (2 in Front), Programmable circumferential LED lighting, 4 emergency buttons

EXTENSIONS

Accessories	Reference Geometry, Auto-charger, manual charger, manual drive pendant
Attachments	Lift (Pallet and Platform), Cart Pulling, Conveyor (Roller, Chain, Belt w/ adjustable height), Box Carrying Frame - Please ask for custom design alternatives