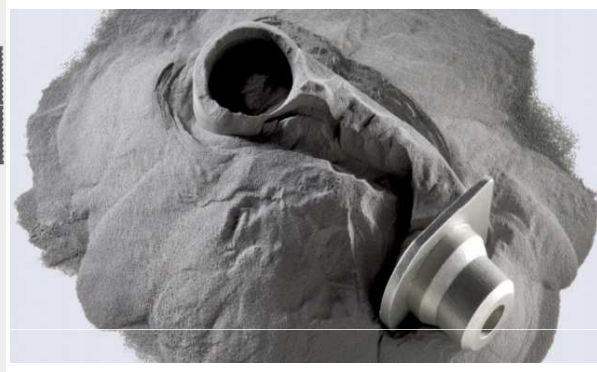


# German CONCEPTLASER 金屬3D打印機

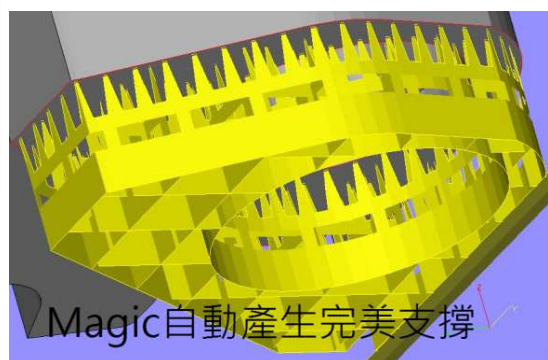
## Mlab Cusing

- Exchange Build chamber, **all in one** 可更換式材料缸
- Build Envelope options, **90x90, 70x70, 50x50mm** 材料缸大小可選擇
- Standard 240v supply, **single phase** 240v單相電源
- Small footprint, **710mm wide to fit into standard room** 佔地空間細小, 只有710mm闊度
- Materials to suit target industries, **Cobalt Chrome, Stainless Steel, 18c Yellow Gold, Silver, Bronze and Titanium**
- Fine 50w fibre Laser, **0.035mm spot size (100w option)** 0.035mm光纖激光
- From 0.015mm build layers, **no layer effect, density close to 100%** 看不見層厚, 接近100%密度
- 隨機可購買功能強大Magics軟件, 可自動產生完美支撐, 自動修復STL, 掏空, 打孔, 造字體等編輯功能

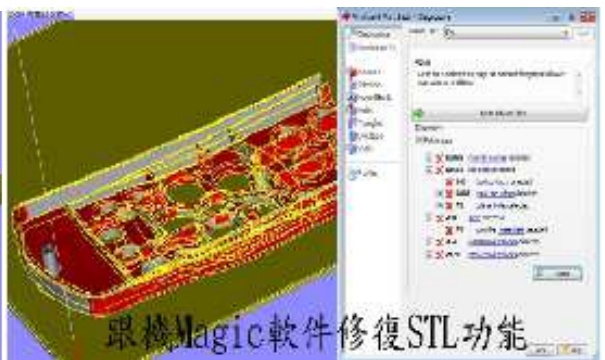
型號Model	Mlab Cusing	M1 Cusing (Non-reactive)	M2 Cusing (reactive)	X line 1000R
打印面積(X,Y,Z) Build area	50 x 50 x 80 mm 70 x 70 x 80 mm 90 x 90 x 80 mm	250 x 250 x 250 mm	250 x 250 x 280 mm	630 x 400 x 500 mm
對焦直徑Focus diameter	Approx. 40µm	50 - 100µm	50 - 200µm	Approx. 100 - 500µm
Z Layer thickness	15 - 30 µm	20 - 80 µm	20 - 80 µm	30 - 200µm
生產速度Production Speed	2-20 cm <sup>3</sup> /h	2-10 cm <sup>3</sup> /h	2-20 cm <sup>3</sup> /h	10-100 cm <sup>3</sup> /h
尺寸(WxHxD)Size	710 x 1850 x 1000 mm	2362 x 2308 x 1535 mm	2440 x 2354 x 1630 mm	4415 x 3070 x 3900-4500 mm
重量Weight	480 kg	1500 kg	2000 kg	8000 kg
電壓Voltage	230V, 單相, 16A	400V, 三相, 32A	400V, 三相, 32A	400V, 三相, 63A
惰性氣體Gas Supply	N <sub>2</sub> , Argon	N <sub>2</sub> , Argon	N <sub>2</sub> , Argon	N <sub>2</sub> , Argon



Powder materials



Magic自動產生完美支撐



跟機Magic軟件修復STL功能

總代理

**保利機械有限公司**  
Bolee Machine Tool Ltd.

香港葵涌大連排道21-33號宏達工業中心11樓1110室  
Rm 1110, 11/F, Vanta Ind'l Centre, 21-33 Tai Lin Pai Rd., Kwai Chung, Hong Kong  
東莞辦：東莞市鳳崗鎮雁田怡紅路怡安(東山)第三座東興樓310號地舖  
廣州辦：廣州市天河區體育西路105號天文苑B2座2502室

電話：(852) 2421 8529  
E-mail: bolee@bolee.com.hk  
電話：(0769) 8777 3560  
電話：(020) 3879 2166

傳真：(852) 2333 4330  
傳真：(0769) 8751 0692  
傳真：(020) 3879 2205

URL: [www.bolee.com.hk](http://www.bolee.com.hk)



### Powder Materials

- Stainless steel 316L (1.4404)
- Bronze
- Silver 930 Sterling
- Gold 18kt, yellow, pink & white



### LaserCUSING Material CL 50WS 熱作鋼

- Hot-work steel
- Powder material (1.2709)
- For the production of parts as well as tool components of production
- Moulds for plastics



### LaserCUSING Material CL 30AL 鋁

- Aluminum
- Powder material (AlSi12)
- For the production of technical prototypes or small series



### LaserCUSING Material CL 40TI 鈦合金

- Titanium
- Powder material (TiAl6V4)
- For the production of lightweight components and medical implants

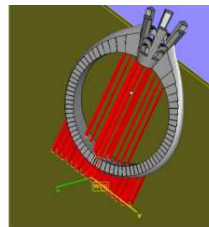


### LaserCUSING Material CL 100NB 鎳合金

- Nickel-based alloy
- Powder material (Inconel 718)
- For the production of heat-resistant components in the automotive and aerospace industry



Unused powder back into storage

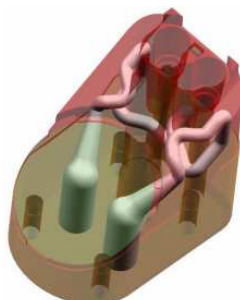


Breakaway support Structures, created.



40 finished part with supports on platform are completed in 15 hours.

Insert for steam iron



Material: CL 50WS  
Size of insert: 44 x 64 x 63 mm  
CAD-preparation / setup: 15 min.  
Buildtime: 12 hours  
Fitting and polishing: 13,5 hours



總代理

**保利機械有限公司**  
Bolee Machine Tool Ltd.

**URL: [www.bole.com.hk](http://www.bole.com.hk)**

香港葵涌大連排道21-33號宏達工業中心11樓1110室  
Rm 1110, 11/F, Vanta Ind'l Centre, 21-33 Tai Lin Pai Rd., Kwai Chung, Hong Kong  
東莞辦：東莞市鳳崗鎮雁田怡紅路怡安(東山)第三座東興樓310號地舖  
廣州辦：廣州市天河區體育西路105號天文苑B2座2502室

電話：(852) 2421 8529  
E-mail: [bole.com.hk](mailto:bole.com.hk)  
電話：(0769) 8777 3560  
電話：(020) 3879 2166

傳真：(852) 2333 4330  
傳真：(0769) 8751 0692  
傳真：(020) 3879 2205