

"EasyInspector" is a general-purpose inspection software package that is simple to operate and can be used with low-cost USB cameras. Users can simply install the software and connect a commercially available webcam. It is easily possible to build a low-cost do-it-yourself inspection system.

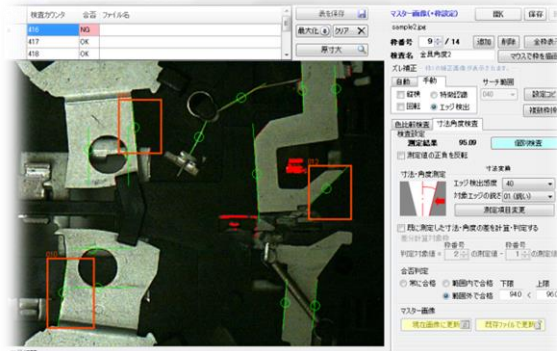
# EasyInspector

## Why its easy to introduce

- It can be used immediately by simply installing the software and a USB camera, such as a webcam, to your PC.
- A USB is all you need to build the system - no image input board or I/O port is required.

## Why operation is simple

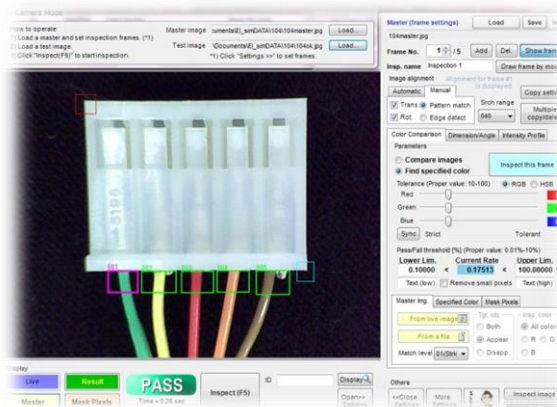
- Only the necessary items are displayed, eliminating the more esoteric settings.
- Most acceptance criteria can be linked to a scale from "strict" to "lenient"



Part dimensions and angles



Assembly mistakes

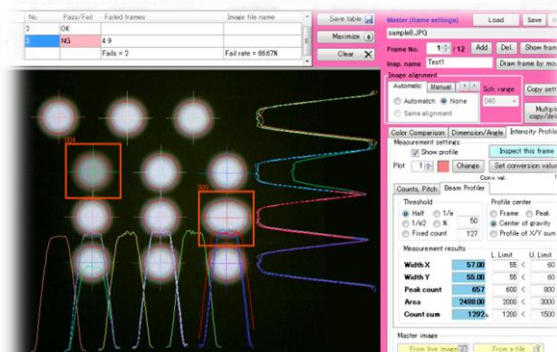


Wiring color mistakes

Hole and radius size and position



LED lighting status



Point brightness and spread



Missing LCD display

Communication functions  
Remote inspection and operative association with external devices is possible using the various communication functions.

- ▶ socket communication (control from external software, LAN)
- ▶ RS-232C communication (control from an external device)
- ▶ I/O (control from a sequencer, etc.)
- ▶ communication through exchange of text files (control from external software)

I/O Unit



總代理



保利機械有限公司  
Bolee Machine Tool Ltd.

香港葵涌大連排道21-33號宏達工業中心11樓1110室  
Rm 1110, 11/F, Vanta Ind'l Centre, 21-33 Tai Lin Pai Rd., Kwai Chung, Hong Kong

電話: (852) 2421 8529

傳真: (852) 2333 4330

E-mail: bolee@bolee.com.hk